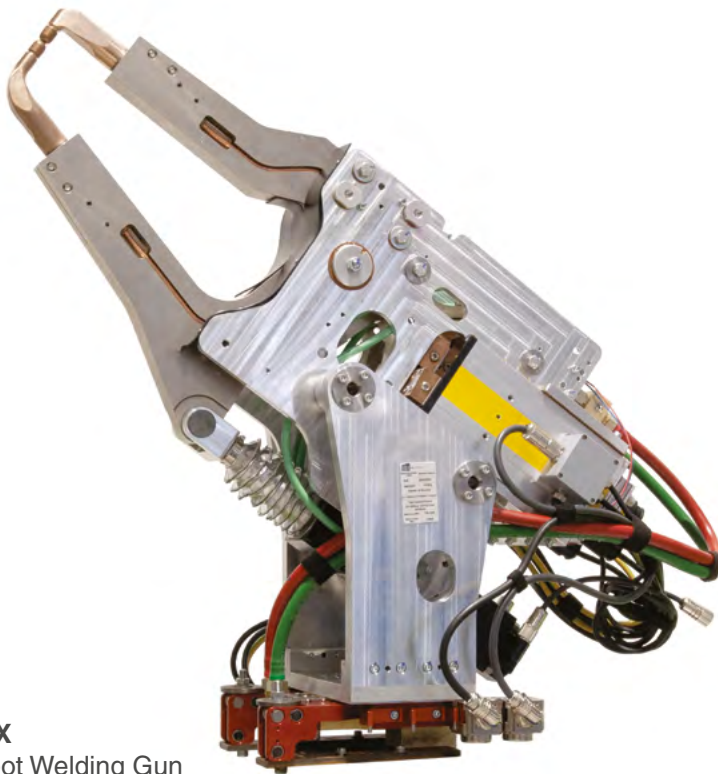


### V6 SERIES



**V6-C**  
Robot Welding Gun



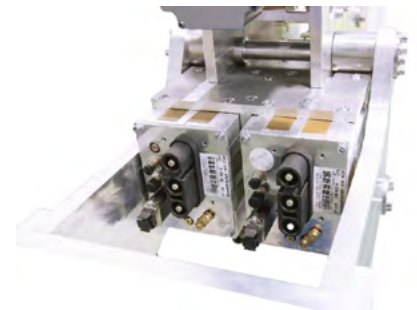
**V6-X**  
Robot Welding Gun

#### FOR ALUMINUM WELDING

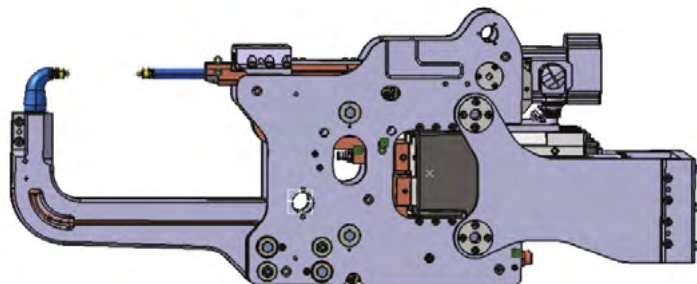
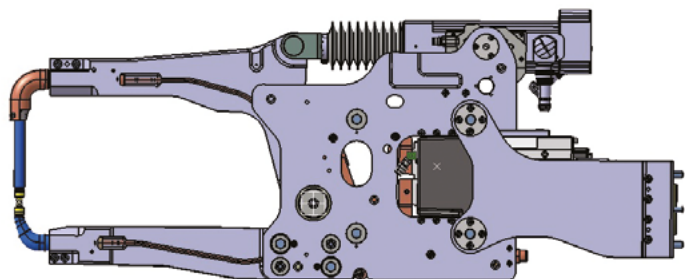
Tip Force up to: 9 kN  
Current Max: 50 kA

#### CHARACTERISTICS:

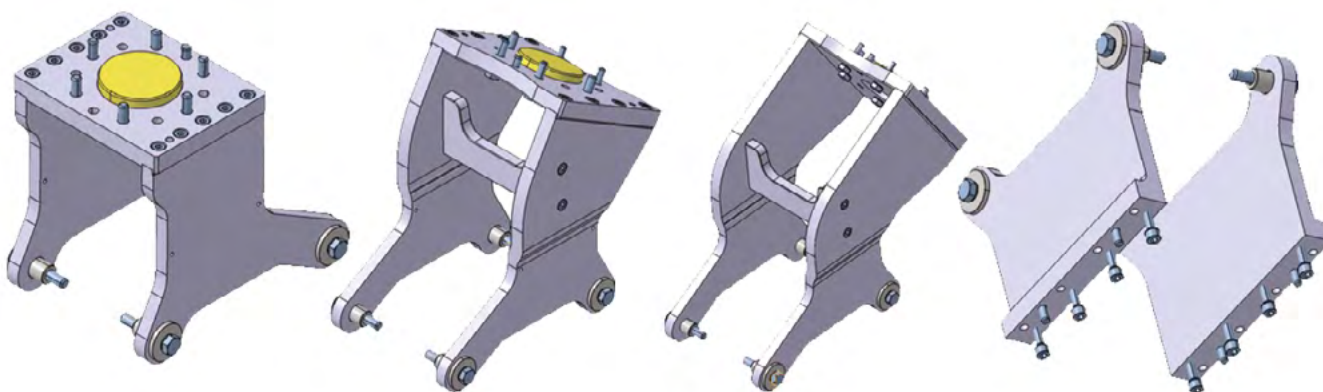
- **Standardization:**  
Standardized Body, Bracket, Transformer and Actuator as main parts of Welding Gun.
- **Modularity:**  
Library of more than 20 different standard bracket;  
Copper round arms, Aluminum arms, or mixed arms;  
Actuator for common Robots.
- **Reliability:**  
Simple maintenance;  
Very easy and short change time of components with a reduced number of tools;  
Strategy "no spare guns"



Double MF 180 kVA at 50%



Only one Gun Body for both C and X Guns



Brackets for various applications



MF Transformers

**MF TRANSFORMER FOR X GUN** (example):

Standard:	ISO 5826-22829
Insulation Class:	F
Weight:	19 kg
Rated Supply Voltage $U_{1N}$ :	530 V
Frequency F:	1000 Hz
Rated Output No-Load $U_{2d}$ :	17 V

Turns Ratio:	38:1
Input Power 20% Duty Fact. $S_{20\%}$ :	154.8 kVA
Perman. Power $S_p$ :	109.4 kVA
Secondary Perman. Current $I_{2p}$ :	- -
Cooling Water:	8 l/min.
Differential Pressure:	0.06 Mpa